

## Information for adult haemoglobinopathy carriers

You are a

**beta thalassaemia carrier**

Your test result shows:  $\beta$  thalassaemia carrier



This resource is available in Urdu, Chinese and Polish, and in an Easy Read format. NHS Health Scotland is happy to consider requests for other languages and formats. Please contact 0131 314 5300 or email [nhs.healthscotland-alternativeformats@nhs.net](mailto:nhs.healthscotland-alternativeformats@nhs.net)

Published by NHS Health Scotland

1 South Gyle Crescent  
Edinburgh EH12 9EB

© NHS Health Scotland 2014

Published by NHS Health Scotland with material reproduced from a publication of the NHS Sickle Cell and Thalassaemia Screening Programme (operated by Public Health England).

All rights reserved. Material contained in this publication may not be reproduced in whole or part without prior permission of NHS Health Scotland (or other copyright owners). While every effort is made to ensure that the information given here is accurate, no legal responsibility is accepted for any errors, omissions or misleading statements.

NHS Health Scotland is a WHO Collaborating Centre for Health Promotion and Public Health Development.

## What is my test result?

---

The substance in your blood that carries oxygen around your body is called haemoglobin. You had a blood test recently to check your haemoglobin type. **The test result shows that you are healthy** – there is no need to worry about being unwell.

But the result shows that you are a beta thalassaemia carrier (some people call it 'having a trait').

This leaflet gives you information about being a carrier, and what this means for you and your family.

## What is a beta thalassaemia carrier?

---

For everything that you inherit, you get one gene from your biological mother and one gene from your biological father. For example, your genes control the colour of your skin, hair and eyes.

Your genes also control the type of haemoglobin you inherit. The usual type is called 'A'.

You have inherited the usual haemoglobin A from one of your parents, and a gene to make little or no haemoglobin A from the other parent. We call this being a beta thalassaemia carrier.

**Because you have inherited usual haemoglobin A from one parent, you are healthy. You will never develop a haemoglobin disorder. But there is a chance that you could pass on beta thalassaemia to your children.**

## How is my test result written?

---

The haemoglobin gene you have inherited is written  $\beta$  thalassaemia carrier (or beta thalassaemia carrier).

The Greek letter “ $\beta$ ” means beta.

## What does this result mean for me?

---

Being a beta thalassaemia carrier will not generally cause you any health problems.

The reason why you need to understand about being a beta thalassaemia carrier is because you could pass the gene to your children. We explain this below.

## What could my result mean for my children?

---

As a carrier, there is a chance that you could pass on the gene for beta thalassaemia to any children that you have. Only the biological parents can pass this genetic information on to their child.

If you have a child with a partner who has the usual haemoglobin AA, there is a 1 in 2 (50%) chance that your child could be a carrier (like you).

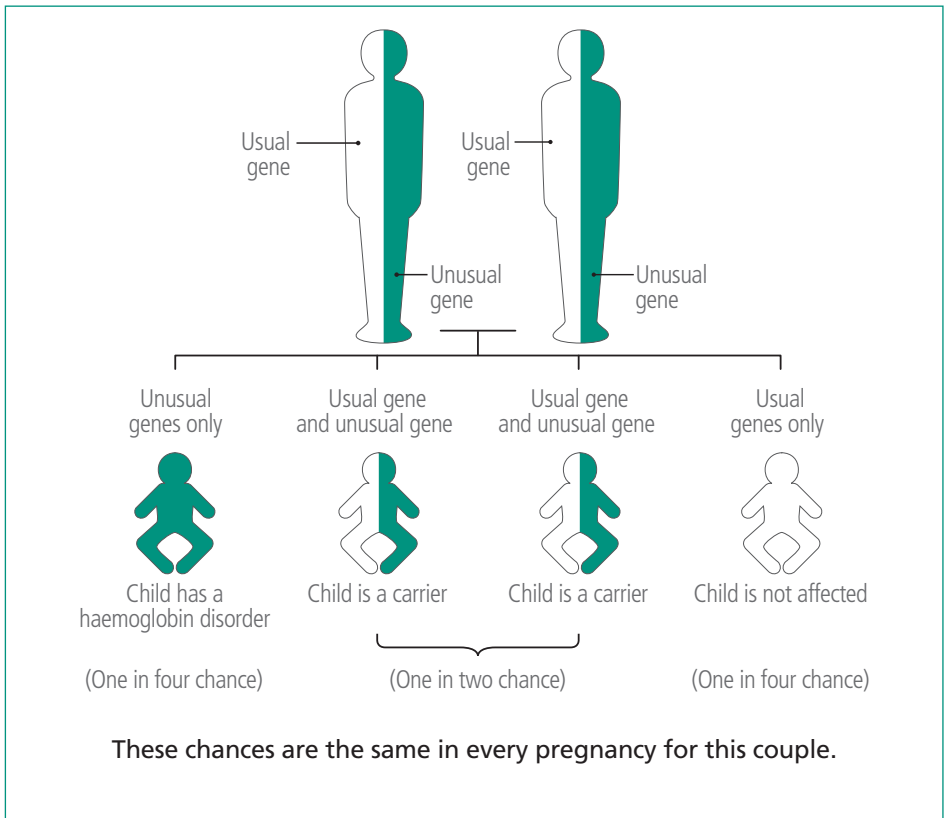
If you have a child with a partner who is also a **beta thalassaemia carrier**, there is a 1 in 4 (25%) chance that your child could inherit beta thalassaemia major. This is a serious health condition which we explain in the following pages.

If you have a child with a partner who carries a gene for **any other type of unusual haemoglobin**, there is a 1 in 4 (25%) chance that your child could inherit unusual haemoglobin from both parents. The type of disorder depends on which genes are inherited.

Your partner will only know they are a carrier if they have had a specific blood test to check their status. We will offer fathers-to-be this test when antenatal screening shows the mother is a carrier. But both men and women can ask for a test at any time from their GP.

Below is a diagram showing an example of how haemoglobin inheritance works.

The parents are both carriers. They are drawn in two colours to show that they have one usual haemoglobin gene (white) and one unusual gene (green).



## What kind of disorder could my child inherit?

---

There are a number of haemoglobin disorders. Some are more serious than others. The most serious disorders are called sickle cell disease and thalassaemia major. People who have these conditions will need specialist care throughout their lives.

The type of disorder your child could inherit will depend on what types of haemoglobin both biological parents have. The chart opposite shows a combination of different carriers and the condition a child could inherit. We have only shown the most common types of carrier in Scotland and the more significant conditions. The most serious conditions are shaded green.



## You are a beta thalassaemia carrier.

If your partner is a carrier of beta thalassaemia ( $\beta$ thalassaemia carrier)	There is a 25% (1 in 4) chance your child could inherit beta thalassaemia major.	This is usually serious and needs regular treatment.
	There is a 25% (1 in 4) chance your child could inherit beta thalassaemia intermedia.	This is usually moderate or mild.
If your partner is a carrier of delta beta thalassaemia ( $\delta\beta$ thalassaemia carrier)	There is a 25% (1 in 4) chance your child could inherit beta thalassaemia/delta beta thalassaemia.	This is a type of thalassaemia major. It is usually serious and needs regular treatment.
	There is a 25% (1 in 4) chance your child could inherit thalassaemia intermedia.	This is usually moderate or mild.
If your partner is a carrier of haemoglobin E (Hb AE)	There is a 25% (1 in 4) chance your child could inherit haemoglobin E/beta thalassaemia.	This is a type of thalassaemia major. It is usually serious and needs regular treatment.
	There is a 25% (1 in 4) chance your child could inherit thalassaemia intermedia.	This is usually moderate or mild.
If your partner is a carrier of haemoglobin Lepore (Hb A Lepore)	There is a 25% (1 in 4) chance your child could inherit haemoglobin Lepore/beta thalassaemia.	This is a type of thalassaemia major. It is usually serious and needs regular treatment.
	There is a 25% (1 in 4) chance your child could inherit thalassaemia intermedia.	This is usually moderate or mild.
If your partner is a carrier of haemoglobin O <sup>Arab</sup> (Hb AO <sup>Arab</sup> )	There is a 25% (1 in 4) chance your child could inherit haemoglobin O <sup>Arab</sup> /beta thalassaemia	This is a type of thalassaemia intermedia. It is usually moderate or mild.
If your partner is a carrier of haemoglobin S (Hb AS) (sickle cell carrier)	There is a 25% (1 in 4) chance your child could inherit haemoglobin S/beta thalassaemia.	This is a type of sickle cell disease. It can be serious, moderate or mild and needs regular treatment.

## **What does my result mean for other people in my family?**

---

The fact that you are a beta thalassaemia carrier means other members of your family could be carriers too.

It is a good idea to talk to your blood relatives (such as your parents, brothers, sisters, uncles, aunts and cousins) and encourage them to get a test before they start a family or have any more children. Showing them this leaflet may help.

## **Information about the most serious haemoglobin disorders**

---

**Please remember that you are a 'carrier'. You do not have any of the haemoglobin disorders described below. The following is for information only.**

The most severe haemoglobin disorders are thalassaemia major and sickle cell disease. People who have these conditions will need specialist care throughout their lives. Other types of haemoglobin disorders that may need treatment are shown in the table on page 7.

### **People with thalassaemia major:**

- are very anaemic (their blood has difficulty carrying oxygen);
- need blood transfusions every three to five weeks; and
- need medicines throughout their lives to stop the iron overload which is a result of the blood transfusions.



## People with thalassaemia intermedia:

This condition is very variable and not usually as serious as thalassaemia major, but sometimes does need regular treatment. Your health professional will be able to give you more advice about this.

## People with sickle cell disease:

- can have attacks of very severe pain;
- can get serious, life-threatening infections;
- are usually anaemic (which means that their blood has difficulty carrying oxygen); and
- need medicines and injections when they are children and throughout the rest of their lives to prevent infections.

There are also other, less common haemoglobin disorders. Many of these are not serious.



## Common questions

---

### **Why didn't I know about this? I have had blood tests before.**

Some routine blood tests may suggest that you are a beta thalassaemia carrier, but further tests are needed to confirm this.

### **What's the difference between being a carrier and having a disorder?**

Carriers are generally well and are only identified with careful testing. People with a disorder are often ill and need treatment.

### **As a carrier could I develop a haemoglobin disorder?**

No, you cannot develop a haemoglobin disorder because you have one gene which makes the usual haemoglobin, Hb A. But you will always be a carrier.

### **Is being a carrier infectious?**

No, you can only be a carrier if you inherit the gene from one of your biological parents.

### **Does being a carrier affect my ability to have children?**

No, it does not affect your ability to have children.

### **Am I protected from malaria?**

No you are not protected from malaria. It is important that you take all the normal precautions if you are travelling to a country where there is a risk of malaria. This includes taking anti-malaria medication.

## What should I do now?

---

- Let your family doctor (GP) know that you are a beta thalassaemia carrier.
- If you are expecting a baby or planning to have a baby, now or in the future, we strongly recommend that your partner gets tested to see if they are a carrier.
- You can get free information and advice to help you understand the implications of being a beta thalassaemia carrier. Ask your doctor or health professional to refer you to your local Clinical Genetics Service.
- If you already have adult children, they may wish to be tested as well.
- It is a good idea to talk to other members of your family and encourage them to get a test before they start a family, or have any more children. It is equally important for men and women to be tested.
- The test for unusual haemoglobin is a simple blood test and takes just a few minutes. People can ask for the test at any time in their life.



## More Information?

---

If you have any questions about any of the information in this leaflet, please talk to your Health Visitor, GP or local genetics service.

### **West of Scotland Regional Genetics Service**

Level 2, Laboratory Medicine Building  
Southern General Hospital  
1345 Govan Road  
Glasgow G51 4TF  
Phone: 0141 354 9200

Catchment areas: Greater Glasgow, Argyll & Clyde, Ayrshire & Arran, Forth Valley, Lanarkshire and Dumfries & Galloway

### **East of Scotland Regional Genetics Service**

Human Genetics Unit, Level 6  
Ninewells Hospital and Medical School  
Dundee DD1 9SY  
Phone: 01382 632035

Catchment areas: Dundee, Perth, North Fife, Angus and Perthshire

### **North of Scotland Clinical Genetics Service**

Ground floor, Ashgrove House  
Foresterhill  
Aberdeen AB25 2ZA  
Phone: 01224 552120

### **Inverness Clinical Genetics Office Maternity Annexe**

Raigmore Hospital  
Old Perth Road  
Inverness IV2 3UJ  
Phone: 01463 705902

Catchment areas: Grampian, Highland, Orkney, Shetland and Western Isles

### **South East of Scotland Regional Genetics Service**

Department of Clinical Genetics  
Western General Hospital  
Crewe Road  
Edinburgh EH4 2XU  
Phone: 0131 537 1116

Catchment areas: Lothian, Fife  
and Borders

**UK Thalassaemia Society**

19 The Broadway  
Southgate Circus  
London N14 6PH

Phone: 020 8882 0011

Email: [office@ukts.org](mailto:office@ukts.org)

Website: [www.ukts.org](http://www.ukts.org)

**The Sickle Cell Society**

54 Station Road  
London NW10 4UA

Phone: 020 8961 7795

Helpline: 0800 001 5660

Email: [info@sicklecellsociety.org](mailto:info@sicklecellsociety.org)

Website: [www.sicklecellsociety.org](http://www.sicklecellsociety.org)

**Accessible Publishing of  
Genetic Information (APoGI)**

Website: [www.chime.ucl.ac.uk/  
APoGI](http://www.chime.ucl.ac.uk/APoGI)

This publication is available online at [www.healthscotland.com](http://www.healthscotland.com) or telephone **0131 314 5300**.

## Traditional Chinese

您也可以登入 [www.healthscotland.com](http://www.healthscotland.com)  
瀏覽本刊物，或撥打 **0131 314 5300** 查詢。

## Polish

Ta publikacja jest dostępna online na stronie [www.healthscotland.com](http://www.healthscotland.com) lub pod numerem telefonu **0131 314 5300**, gdzie można także zgłaszać wszelkie zapytania.

## Urdu

۔ اشاعت آن لائن [www.healthscotland.com](http://www.healthscotland.com) پر دستیاب ہے  
کسی سوالات کے لیے **0131 314 5300** پر ٹیلی فون کریں۔

This resource is available in Urdu, Chinese and Polish, and in an Easy Read format. NHS Health Scotland is happy to consider requests for other languages and formats.

Please contact **0131 314 5300** or email [nhs.healthscotland-alternativeformats@nhs.net](mailto:nhs.healthscotland-alternativeformats@nhs.net)