

Primary Care Strategy Bulletin

Better Health • Better Care • Better Value • Better Workplace

Edition No 1 | June 2026

Introduction

Aligning with **NHSGGC Transforming Together Vision**; Primary Care has a pivotal role to play as we **Listen, Learn and Transform Together**.

These new alignment arrangements have been agreed by the Transforming Together Executive Oversight Group from **1st October 2025**.

As we move into this new chapter the **Primary Care Strategy** will connect our four Independent Contractors and Practitioners; and our wider Primary and Community Care workforce across NHSGGC focusing on innovation, reform and improvement.

The Primary Care Strategy Bulletin will act as a communication tool, keeping our Primary Care workforce, staff side and public partners updated on progress of the implementation of the Primary Care Strategy under the alignment of Transforming Together.

This bulletin will also be used as a method for feedback and engagement with our key stakeholders.



Billy McClean, Executive Lead for Primary Care

**Chief Officer,
Renfrewshire HSCP**

Listening, Learning and Transforming Together

The 'Transforming Together agenda and Portfolio' is underpinned by two key governance forums which provide direction and assurance to all activity. The Portfolio Board and the Executive Oversight Groups which are chaired by NHSGGC Chief Executive and Deputy Chief Executive respectively.

NHSGGC Transforming Together (TT) Programme has 6 improvement programmes under this remit:

- **Interface and Urgent Care**
- **Primary Care**
- **Mental Health**
- **Cancer and Planned Care**
- **Women and Children**
- **The Way Forward**

Access the Primary Care Hub [Primary Care - NHSGGC](#)
& [Primary Care Staff Resources - NHSGGC](#)

What is Primary Care?

Fraser McJannett, Director of Primary Care explains that the term 'Primary Care' is used to describe services that people often use as the first NHS point of contact for their health needs.

Primary Care is often seen as a 'front door' to the wider NHS.

Services are provided by

- 227 General Practices,
- 288 Community Pharmacies,
- 255 Dental Practices and
- 189 Community Optometry Practices.

These four Independent Contractor and Practitioner groups provide care across 6 Health and Social Care Partnerships (HSCP) in our local communities across NHS Greater Glasgow and Clyde.

Primary Care also includes a range of professionals including

- Community Link Workers,
- Pharmacy professionals,
- Advanced Nurse Practitioners,
- Practice Nurses,
- Physiotherapists,
- Managers and many more staff

Dedicated Workstreams have been set up for each Strategy area of focus.



Fraser McJannett,
Director of Primary
Care & GP OOH
Service, NHSGGC

Primary Care Strategy

Gary Dover in his new role as Head of Primary Care for NHSGGC will Lead the Primary Care Strategy. The strategy sets out both short and longer term ambitions and approaches to support the transformation of Primary Care Services over the next 5 years.

With over 8,000 downloads of the Strategy to date, it is currently one of the most downloaded strategies on NHSGGC website. Accessible by clicking this image.



Gary Dover,
Head of Primary
Care, Primary Care
Support, NHSGGC

Governance Structure

Dr Jude Marshall, Deputy Medical Director for Primary Care shares that the Primary Care Programme Board will oversee Strategy implementation.

Workstreams and priority areas will be progressed through a Strategy Delivery Group, which provides a platform that ensures direction of the Strategy is one that allows us to Transform Primary Care Together.

Dr Jude Marshall,
Deputy Director
of Primary Care,
NHSGGC



Access the Primary Care Hub [Primary Care - NHSGGC](#)
& [Primary Care Staff Resources - NHSGGC](#)

Ambitions

Sustainable Primary Care at the heart of the GGC system.

NHSGGC Primary Care Strategy aims to transform Primary Care to be more sustainable and responsive to the needs of the community.

By 2029 we want to have:

- The right people working in Primary Care with the right skills.
- Technology to improve patient care and outcomes.
- Plans to continue to develop strong leadership and planning for our teams.
- Patients with a better understanding of our services
- People using the right service at the right time.
- Ways to make it easier to stay well and get timely support
- Better access to information and resources.
- Ways to make it easier for everyone to access services and better health.

Shared Vision

We have committed to creating a strong shared vision, purpose and identity for Primary Care within NHSGGC.

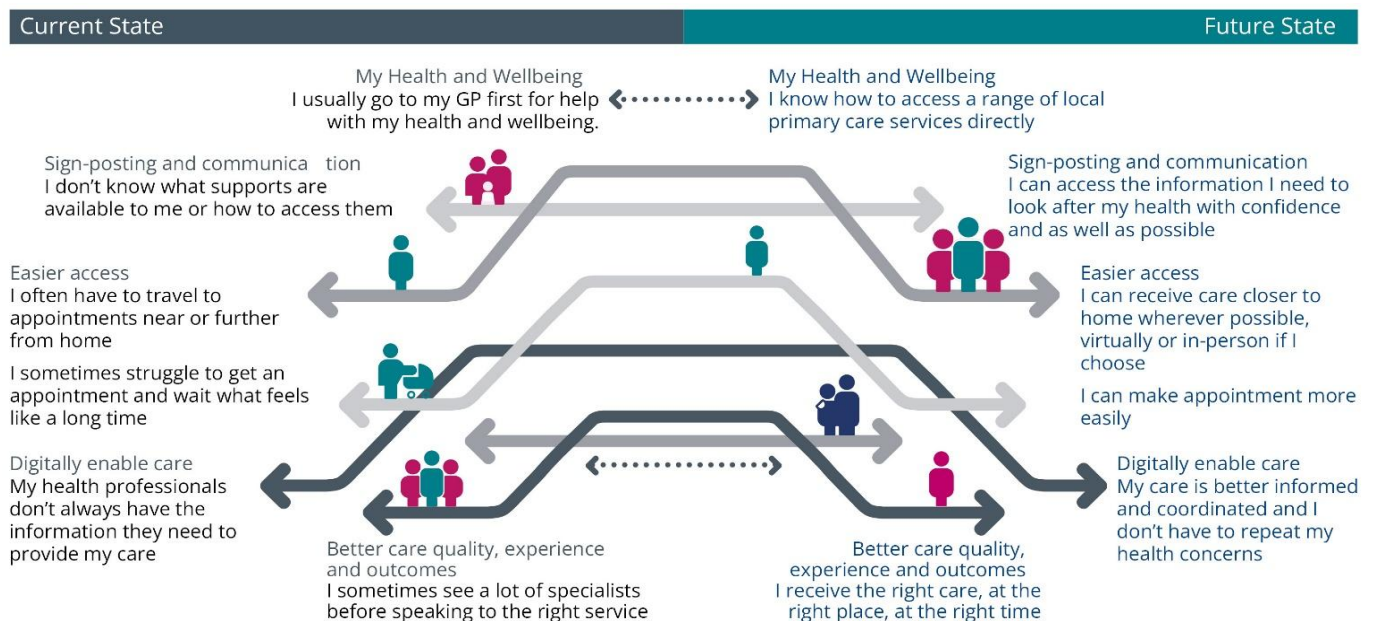
As a significant part of that work, we are creating a distinct brand identity for Primary Care with a vision statement.

We are asking our stakeholders to select which statement best represents our work and services in Primary Care.

Call To Action

Get involved and be part of a shared vision for Primary Care. Help create a Primary Care Strapline. Access [Primary Care Survey](#) to vote for:

- Together for better health
- Healthcare that's part of your community
- Healthcare that's part of our community
- Opening doors to better health
- Accessible, informed and inclusive



The above diagram provides an overview of our current and target state. Future bulletins will share the Primary Care Strategy progress and showcase how we **Transform Together**.