

# 2024 – 2029: Executive Summary

## Greater Glasgow and Clyde





# What is Primary Care

Primary Care is the first place people go when they need help or support to do with their health. It is very important for keeping us healthy and can prevent people from getting sick by helping them early.

Primary Care includes different services which can be found in local areas where people live.



**General Practice (GP)**



**Community Pharmacy**



**Dental and Oral Health**



**Community Optometry**

Primary Care also has other health professionals and wider teams made up of people with different types of skills. They are sometimes called multi-disciplinary teams (MDT). These include people like Community Link Workers, Occupational Therapists, Podiatrists, Nurses and Healthcare Support Workers. They work together to promote health and improve patient care.





In NHS Greater Glasgow and Clyde (NHSGGC), we offer in the region of **1,000 'front doors'** to the NHS, where people can present for healthcare treatment and support.

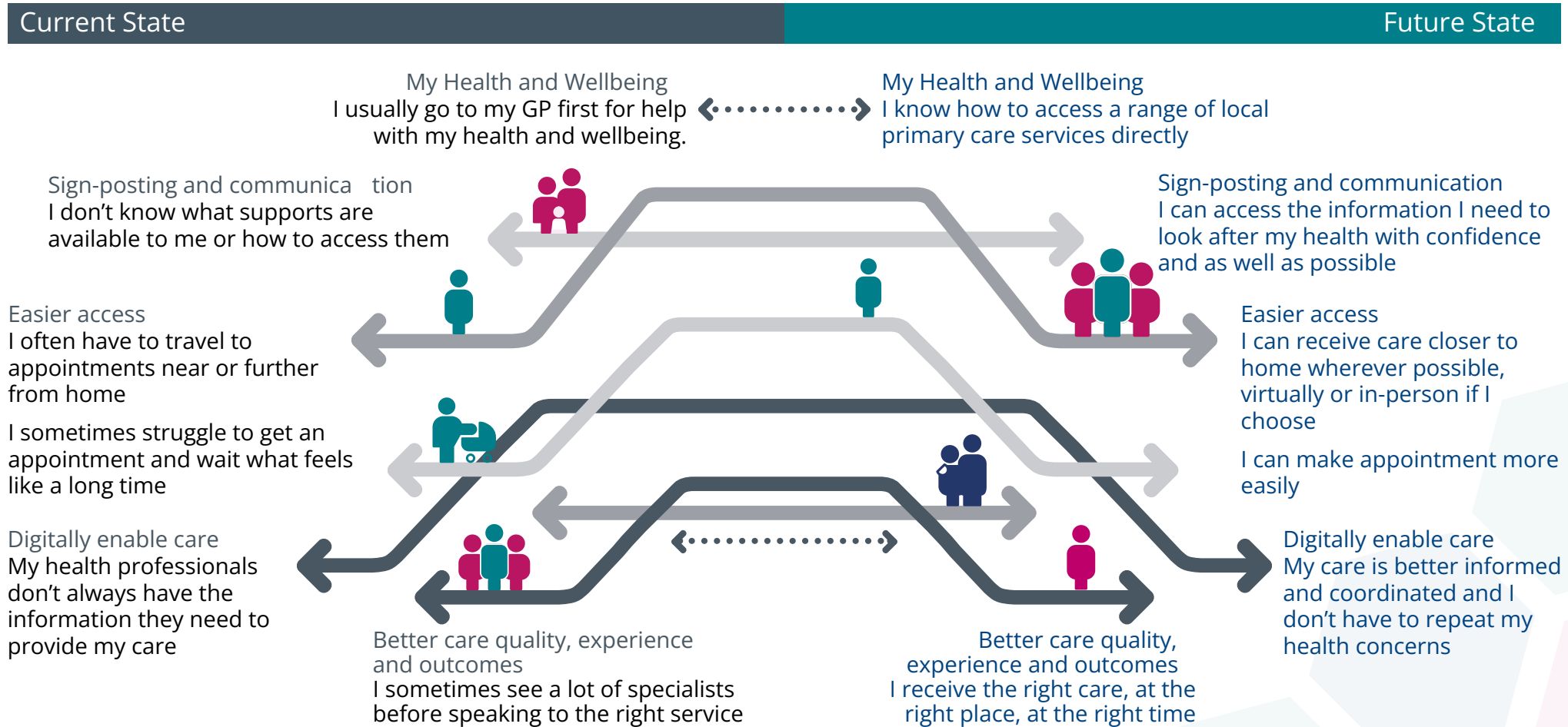




# Primary Care Strategy

We have a five year plan for Primary Care that sets out our long term vision and approach to Primary Care transformation in NHSGCC.

**Here is our future vision for Primary Care.**





## **This plan is an opportunity for Primary Care to change for the better.**

As our population needs grow, Primary Care must respond to change. We need to do this in a way that makes best use of current resource and works alongside wider system changes.

This plan looks over the way we provide Primary Care. It also focuses on the changes we want to make.

### **By 2029 we want to have:**



The right people working in Primary Care with the right skills



Technology to improve patient care and outcomes



Plans to continue to develop strong leadership and planning for our teams



Patients with a better understanding of our services



People using the right services at the right time



Ways to make it easier to stay well and get timely support



Better access to information and resources



Ways to make it easier for everyone to access services and have better health.



# How will we do this?

The NHSGGC Transforming Together Primary Care Programme Board will have oversight of delivery of the Plan. The group has people from all areas of Primary Care and other services that can help shape the future.



The plan will last for **five years** and be **refreshed annually**



It will say **what** we will do



**When** we will do it



**How** we will know if it works.



To find out more about the roles of the professionals behind Primary Care, visit The Faces of Primary Care at: [www.nhsggc.scot/primarycare](http://www.nhsggc.scot/primarycare) or scan the QR code







# **NHSGGC Primary Care Strategy 2024 – 2029: Executive Summary**

February 2026