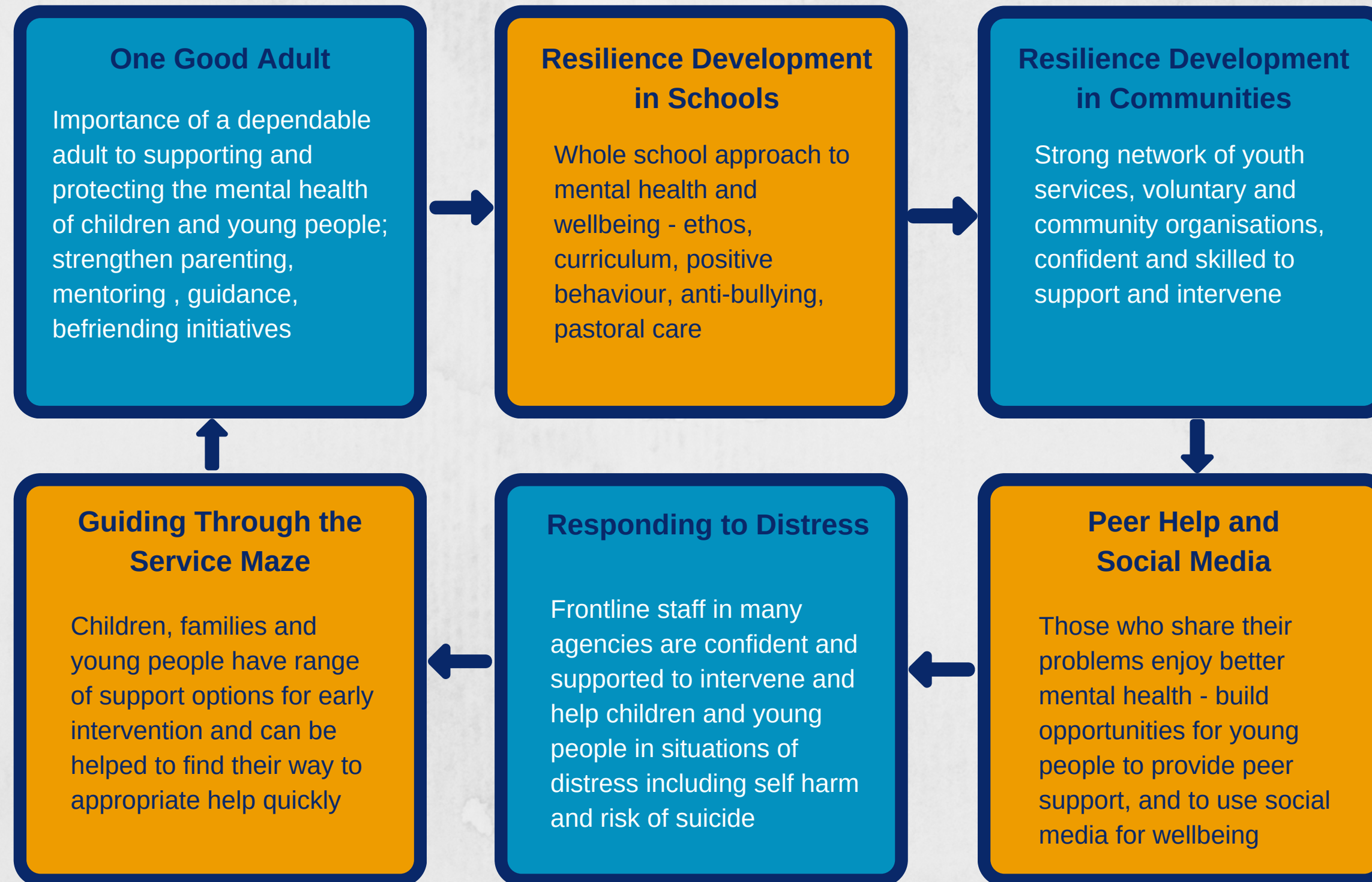


# Mental Health Improvement and Early Intervention Framework for Children and Young People



*Evidence demonstrates that there is no single intervention, therapy or programme that delivers mental wellbeing at a population level. Rather that children and young people require a number of prerequisites to develop resiliently and that these prerequisites span the school, family and community life of young people.*

*The strategy is underpinned by tackling poverty, disadvantage & inequalities as well as having Getting it Right for Every Child core values and principles at the heart of it.*