	NHS GREATER GLASGOW & CLYDE CONTROL OF INFECTION COMMITTEE	Page	1 of 10
		Effective From	Aug 2023
	MENINGOCOCCAL DISEASE GUIDANCE	Review Date	Aug 2025
		Version	8
The most up-to-date version of this guidance can be viewed at the following web page: www.nhsggc.scot/hospitals-services/services-a-to-z/infection-prevention-and-control			

Guidance Objective


To ensure that Healthcare Workers (HCWs) are aware of the actions and precautions necessary to minimise the risk of cross-infection and the importance of diagnosing patients' clinical conditions promptly.

This guidance applies to all staff employed by NHS Greater Glasgow & Clyde and locum staff on fixed term contracts.

KEY CHANGES FROM THE PREVIOUS VERSION OF THIS GUIDANCE


Document Control Summary

Approved by and date	Board Infection Control Committee 24 th August 2023
Date of Publication	30 th August 2023
Developed by	Infection Prevention and Control Policy Sub-Group
Related Documents	National IPC Manual NHSGGC Hand Hygiene Guidance NHSGGC SOP Cleaning of Near Patient Equipment NHSGGC SOP Terminal Clean of Ward/Isolation Room NHSGGC SOP Twice Daily Clean of Isolation Rooms
Distribution/ Availability	NHSGGC Infection Prevention and Control web page: www.nhsggc.scot/hospitals-services/services-a-to-z/infection-prevention-and-control
Lead Manager	Director Infection Prevention and Control
Responsible Director	Executive Director of Nursing

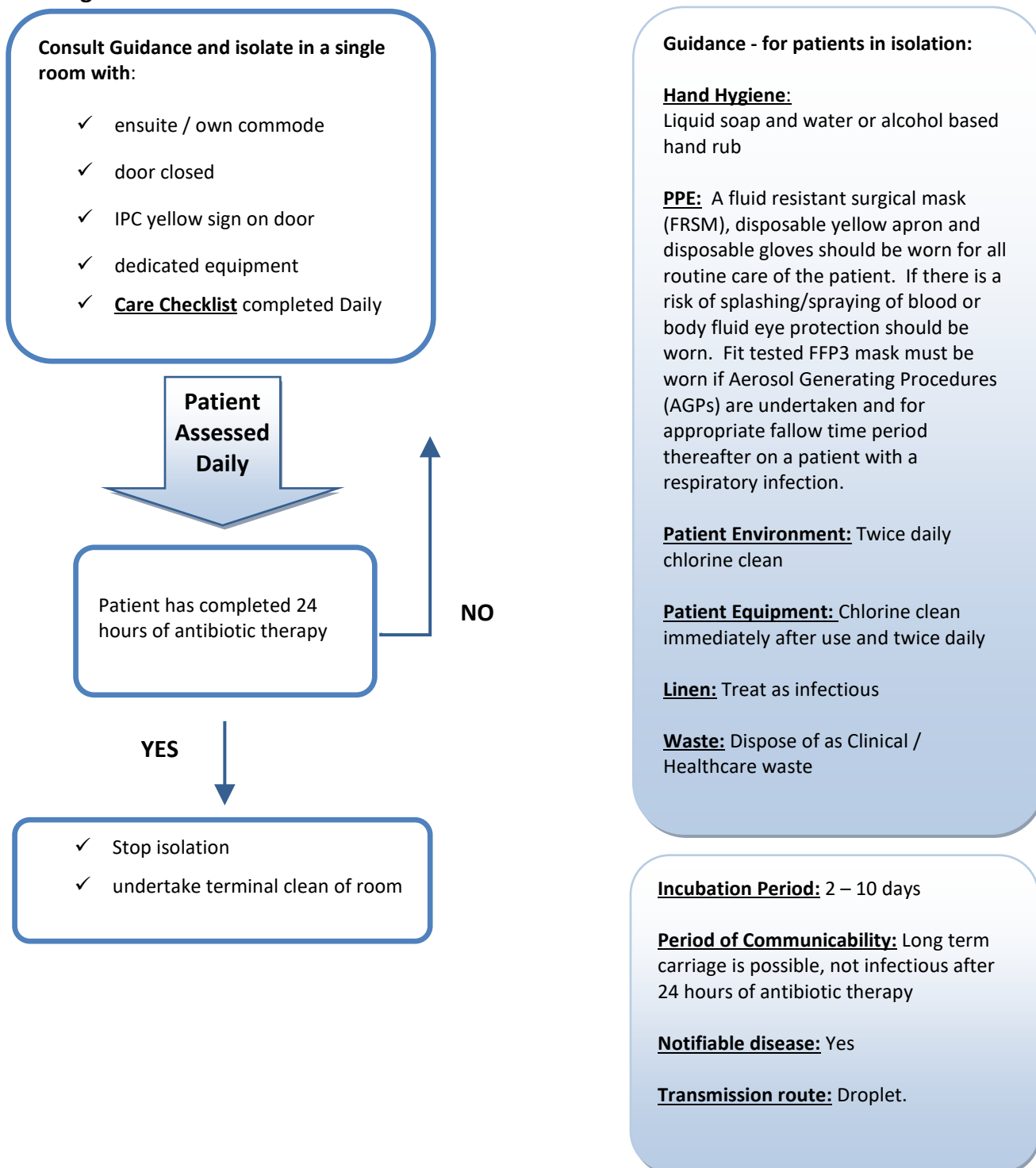
	NHS GREATER GLASGOW & CLYDE CONTROL OF INFECTION COMMITTEE	Page	2 of 10
		Effective From	Aug 2023
	MENINGOCOCCAL DISEASE GUIDANCE	Review Date	Aug 2025
		Version	8
The most up-to-date version of this guidance can be viewed at the following web page: www.nhsggc.scot/hospitals-services/services-a-to-z/infection-prevention-and-control			


CONTENTS

Meningococcal Disease Aide Memoire	3
1. Responsibilities.....	4
2. General Information on Patients with Meningococcal Disease.....	5
3. Precautions for Patients with suspected and/or confirmed Meningococcal Disease	6
4. Evidence Base.....	10

	NHS GREATER GLASGOW & CLYDE CONTROL OF INFECTION COMMITTEE	Page	3 of 10
		Effective From	Aug 2023
	MENINGOCOCCAL DISEASE GUIDANCE	Review Date	Aug 2025
		Version	8
The most up-to-date version of this guidance can be viewed at the following web page: www.nhsggc.scot/hospitals-services/services-a-to-z/infection-prevention-and-control			

Meningococcal Disease Aide Memoire



	NHS GREATER GLASGOW & CLYDE CONTROL OF INFECTION COMMITTEE	Page	4 of 10
		Effective From	Aug 2023
	MENINGOCOCCAL DISEASE GUIDANCE	Review Date	Aug 2025
		Version	8
The most up-to-date version of this guidance can be viewed at the following web page: www.nhsggc.scot/hospitals-services/services-a-to-z/infection-prevention-and-control			

1. Responsibilities

Healthcare Workers (HCWs) must:

- Follow this guidance.
- Inform a member of the Infection Prevention and Control Team (IPCT) if this guidance cannot be followed.
- Notify the Public Health Protection Unit (PHPU) of probable and confirmed cases.
- Implement Care Checklist

Managers must:

- Support HCWs and Infection Prevention and Control Teams (IPCTs) in following this guidance.
- Alert Occupational Health Service (OHS) to any staff exposure.

Infection Prevention and Control Teams (IPCTs) must:


- Keep this guidance up-to-date.
- Provide education opportunities on this guidance.
- Provide advice during outbreaks and incidents.

Public Health Protection Unit (PHPU) must:

- Identify, risk assess and give advice on treatment of non-staff contacts.
- Provide advice and guidance to OHS, and where necessary, work with OHS to risk assess staff contacts.


Occupational Health Service (OHS) must:

- Provide advice to HCWs following possible exposure.
- Where necessary, work with PHPU to support risk assessment and treatment of staff contacts.

	NHS GREATER GLASGOW & CLYDE CONTROL OF INFECTION COMMITTEE	Page	5 of 10
		Effective From	Aug 2023
	MENINGOCOCCAL DISEASE GUIDANCE	Review Date	Aug 2025
		Version	8
The most up-to-date version of this guidance can be viewed at the following web page: www.nhsggc.scot/hospitals-services/services-a-to-z/infection-prevention-and-control			

2. General Information on Patients with Meningococcal Disease


Agent	<p><i>Neisseria meningitidis</i> (meningococcus) is a gram-negative diplococcus divided into several serogroups. There are 12 identified capsular groups of which Group B, C, W and Y are historically the most common in the UK.</p> <p>Carriage of this bacterium in the human nasopharynx is relatively common. Vaccination against groups B, C and ACWY is now included in the UK routine vaccination schedule.</p>
Clinical Condition	Meningococcal disease caused by <i>Neisseria meningitidis</i> can cause a range of illnesses but most commonly presents as septicaemia, meningitis or both.
Mode of Spread	Person-to-person spread by droplet secretions from the respiratory tract. Transmission from the environment is considered insignificant.
Incubation Period	2-10 days, commonly 3-5 days.
Notifiable Disease	<p>Yes</p> <p>Probable and confirmed cases should be notified by medical staff to PHPU.</p> <p>Confirmed case:</p> <p>Clinical diagnosis of meningitis, septicaemia or other invasive disease (e.g. orbital cellulitis, septic arthritis)*AND at least 1 of:</p> <ul style="list-style-type: none"> • <i>Neisseria meningitidis</i> cultured from normally sterile site • Gram negative diplococci seen in normally sterile site • Meningococcal PCR in normally sterile site <p>* <i>Although not meeting the definition of a confirmed case, meningococcal infection of the conjunctiva is considered an indication for public health action because of the high immediate risk of invasive disease.</i></p>
Period of Communicability	Long term carriage and infectivity is possible if not treated. Persons with Meningococcal Disease are not infectious after they have received 24-hours of effective antibiotic therapy which also eradicates nasopharyngeal carriage.
Persons most At Risk	<p>Age-specific attack rates are highest in infants, teenagers and young adults. The highest incidence occurs in winter months.</p> <p>Risk factors include smoking, passive smoking, preceding influenza A infection, upper respiratory infections and overcrowding.</p>

	NHS GREATER GLASGOW & CLYDE CONTROL OF INFECTION COMMITTEE	Page	6 of 10
		Effective From	Aug 2023
	MENINGOCOCCAL DISEASE GUIDANCE	Review Date	Aug 2025
		Version	8
The most up-to-date version of this guidance can be viewed at the following web page: www.nhsggc.scot/hospitals-services/services-a-to-z/infection-prevention-and-control			

<i>In what areas does this guidance apply</i>	All areas.
--	------------


3. Precautions for Patients with suspected and/or confirmed Meningococcal Disease

<i>Accommodation (Patient Placement)</i>	Place a patient with suspected Meningococcal Disease into a single room with en suite facilities if available, until a bacterial cause is excluded or following 24-hours of appropriate antibiotic therapy. If the patient is clinically unsuitable for isolation, a risk assessment must be undertaken, by the clinical team in conjunction with a member of the IPCT, and documented in the patient's notes and IPCT Failure to isolate risk assessment. If a single room is not available, contact the bed manager in the first instance and if necessary, consult a member of the IPCT.
<i>Clinical Waste</i>	All non-sharps waste should be designated as clinical healthcare waste and placed in an orange bag. See NHSGGC Waste Management Policy
<i>Contacts</i>	<p>PHPU will advise regarding provision of prophylaxis, vaccination, information and advice to contacts within the community.</p> <p>For PROBABLE and CONFIRMED Meningococcal Disease only: Most people who develop Meningococcal Disease will have acquired the organism from an asymptomatic individual sometime during the week before they become ill. The aim of public health intervention is to prevent further linked cases, by eradicating the organism from these carriers, and the case, before it causes more illness in susceptible people, and also to prevent follow-on infection to others. Antibiotic prophylaxis is recommended for those who have had close prolonged contact with the case in the 7 days prior to symptoms developing, irrespective of vaccination status including:</p> <p>(a) Those who have had <i>transient close contact</i> with a case <i>only</i> if they have been directly exposed to large particle droplets / secretions from the respiratory tract of a case around the time of admission to hospital.</p>


	NHS GREATER GLASGOW & CLYDE CONTROL OF INFECTION COMMITTEE	Page	7 of 10
		Effective From	Aug 2023
	MENINGOCOCCAL DISEASE GUIDANCE	Review Date	Aug 2025
		Version	8
The most up-to-date version of this guidance can be viewed at the following web page: www.nhsggc.scot/hospitals-services/services-a-to-z/infection-prevention-and-control			

Contacts (cont/...)	<ul style="list-style-type: none"> The case should also receive chemoprophylaxis, unless already treated with IV or IM cefotaxime or ceftriaxone In an outbreak or cluster, chemoprophylaxis for persons other than in the high-risk groups may be recommended by the CPHM. <p>Those with prolonged contact in childcare, nursery or school for several hours a day may be considered contacts and a risk assessment will be carried out by PHPU. The parents will be provided with a letter from NHSGGC informing them of the risk and the symptoms to look out for. Paediatric Hospitals / Units contacts of the case are risk assessed by PHPU, and parents / carers should be prescribed chemoprophylaxis via the GP. All contacts who receive chemoprophylaxis and their GPs are sent information by letter from PHPU. Schools, nurseries, colleges and universities receive information by letter as required.</p>
Domestic Advice	Domestic staff must follow the NHSGGC SOP Twice Daily Clean of Isolation Rooms while transmission based precautions are required. Cleans should be undertaken at least four hours apart.
Equipment	Only take into the room that which is necessary. Where practical allocate individual equipment and decontaminate as per NHSGGC Decontamination Guidance. Please refer to NHSGGC Decontamination Guidance
Exposures	Prevent further cases by using Standard Infection Control Precautions (SICPs) and Transmission Based Precautions (TBPs) while the patient remains in isolation.
Hand Hygiene	Hand hygiene is the single most important measure to prevent cross-infection. Hands must be decontaminated before and after each direct patient contact, after contact with the environment, after exposure to body fluids and before any aseptic tasks. Patients should be encouraged to carry out thorough hand hygiene. Please refer to NHSGGC Hand Hygiene Guidance
Last Offices	See National guidance for Last Offices
Linen	Treat used linen as infectious, i.e. place in a water soluble bag, then into a clear plastic bag (place water soluble bag in the brown plastic bags used in Mental Health areas) tied, then into a red laundry hamper bag. Please refer to National Guidance on the Safe Management of Linen
Moving between wards, hospitals	<ul style="list-style-type: none"> Prior to transfer, inform any receiving ward that the patient has confirmed/suspected meningococcal disease and if appropriate


The most up-to-date version of this guidance can be viewed at the following web page:
www.nhsggc.scot/hospitals-services/services-a-to-z/infection-prevention-and-control

	NHS GREATER GLASGOW & CLYDE CONTROL OF INFECTION COMMITTEE	Page	8 of 10
		Effective From	Aug 2023
	MENINGOCOCCAL DISEASE GUIDANCE	Review Date	Aug 2025
		Version	8
The most up-to-date version of this guidance can be viewed at the following web page: www.nhsggc.scot/hospitals-services/services-a-to-z/infection-prevention-and-control			

and departments (including theatres)	specimens have been taken. <ul style="list-style-type: none"> • Patient movement should be kept to a minimum unless clinically essential. Prior to transfer, HCWs from the ward where the patient is located must inform the receiving ward, theatre or department of the patient's infectious condition.
Notice for Door	The yellow IPC isolation sign must be placed on the door to the patient's room. The door should remain closed and if the door cannot be closed, then an IPCT risk assessment should be completed and reviewed daily.
Patient Clothing	Home Laundering If relatives or carers wish to take personal clothing home, staff must place clothing into a domestic water soluble bag then into a patient clothing bag and ensure that a Washing Clothes at Home Leaflet is issued. NB It should be recorded in the nursing notes and care checklist that both advice and the information leaflet has been issued.
Personal Protective Equipment (PPE)	Yellow apron and gloves before 24-hours of appropriate antibiotics have been completed, the highest risk of transmission to HCWs is by exposure to respiratory secretions. To prevent spread through direct contact PPE (disposable gloves and yellow apron) and fluid resistant surgical facemask (FRSM) must be worn for all direct contact with the patient or the patient's environment/equipment. If there is a risk of splashing/spraying of blood or body fluid eye protection should be worn. AGP'S Fit tested FFP3 mask, disposable yellow apron and gloves & eye protection must be worn if Aerosol Generating Procedures (AGPs) are undertaken on a patient with a respiratory infection. A visor is recommended if a risk of spray of blood or body fluid is anticipated. For AGPs a face fit tested FFP3 should be worn.
Patient information	Provide information on meningococcal disease to the patient / parent / guardian / next-of-kin as appropriate and document in the notes.
Precautions Required	Until 24-hours after appropriate antibiotic therapy or meningococcal disease is no longer considered to be a diagnosis. See Accommodation .

	NHS GREATER GLASGOW & CLYDE CONTROL OF INFECTION COMMITTEE	Page	9 of 10
		Effective From	Aug 2023
	MENINGOCOCCAL DISEASE GUIDANCE	Review Date	Aug 2025
		Version	8
The most up-to-date version of this guidance can be viewed at the following web page: www.nhsggc.scot/hospitals-services/services-a-to-z/infection-prevention-and-control			

<i>Terminal Cleaning of Room</i>	Clean all surfaces and underneath surfaces with chlorine based detergent and a disposable cloth. See Terminal Clean of Ward/Isolation Room SOP
<i>Visitors Paediatric Hospitals / Units</i>	Only parents / designated guardians may visit whilst in isolation.
<i>Visitors Adult Hospital</i>	No specific restrictions. Encourage any visitors to undertake hand hygiene before and after visiting. Visitors are not required to wear apron and gloves, unless they are participating in patient care.

	NHS GREATER GLASGOW & CLYDE CONTROL OF INFECTION COMMITTEE	Page	10 of 10
		Effective From	Aug 2023
	MENINGOCOCCAL DISEASE GUIDANCE	Review Date	Aug 2025
		Version	8
The most up-to-date version of this guidance can be viewed at the following web page: www.nhsggc.scot/hospitals-services/services-a-to-z/infection-prevention-and-control			

4. Evidence Base

PHE - Guidance for the public health management of meningococcal disease in the UK. (2018)

<https://www.gov.uk/government/publications/meningococcal-disease-guidance-on-public-health-management>

[Meningococcal disease: guidance on public health management - GOV.UK \(www.gov.uk\)](http://www.gov.uk)

Immunisation against infectious diseases 'The Green Book' (2006) Updated edition 2016

<https://www.gov.uk/government/collections/immunisation-against-infectious-disease-the-green-book>

[Meningococcal: the green book, chapter 22 - GOV.UK \(www.gov.uk\)](http://www.gov.uk)