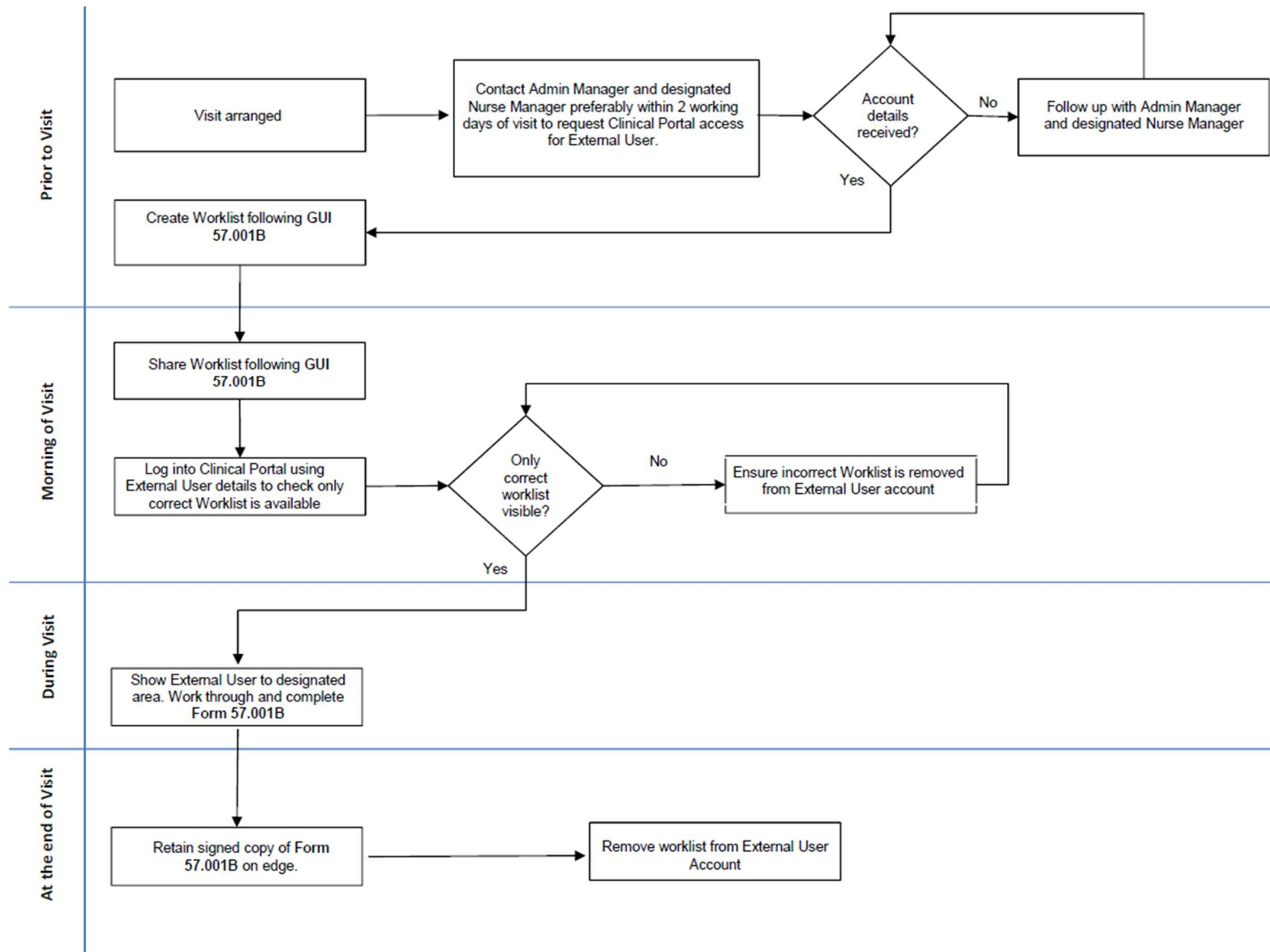


# Glasgow Clinical Trials Unit Guideline

Guideline Number	57.001A	Version	3.0
Title	Clinical Portal Access for External Users in GCRF		



## Glasgow Clinical Trials Unit Guideline

### Guideline signatories

Prepared by	Helen Hart
Approved by	Lynn Prentice

### Document history

Version	Date	Description	Retrospective Implementation
1.0		First release	No
2.0	17/10/2016		No
3.0	10/04/2026	Updated process to align with SOP  Removed need for printing and signing recently searched participants	No

This Guideline is a controlled document. The current version can be viewed on the R&I website, GCTU website and R&I's Q-Pulse account.

Any copy reproduced from the website may not, at time of reading, be the current version.