

Core brief

Daily update
(17 June 2021, 11.30am)

Inverclyde Chief Officer appointed as Chief Executive, Inverclyde Council

Louise Long, Chief Officer, Inverclyde Health and Social Care Partnership, has been appointed as the Chief Executive of Inverclyde Council.

Louise has been Chief Officer with the HSCP since May 2017. Prior to that she was Head of Children, Families and Justice and Chief Social Work Officer at Argyll and Bute Council from 2015, starting at that council in 2012 as Head of Children's Services.

Louise started her career at Glasgow City Council as a social worker, held social work management roles with East Renfrewshire Council, head of service at South Ayrshire and also worked for five years with Aberlour Childcare Trust.



Congratulating Louise on her appointment, Jane Grant, Chief Executive, said: "I would like to thank Louise for her significant contribution to Inverclyde HSCP and to NHS Greater Glasgow and Clyde. Louise has led the integration of NHS and social care in Inverclyde since 2017, working to deliver real improvements to Inverclyde's health and wellbeing and, most recently, safely guiding the HSCP through the pandemic.

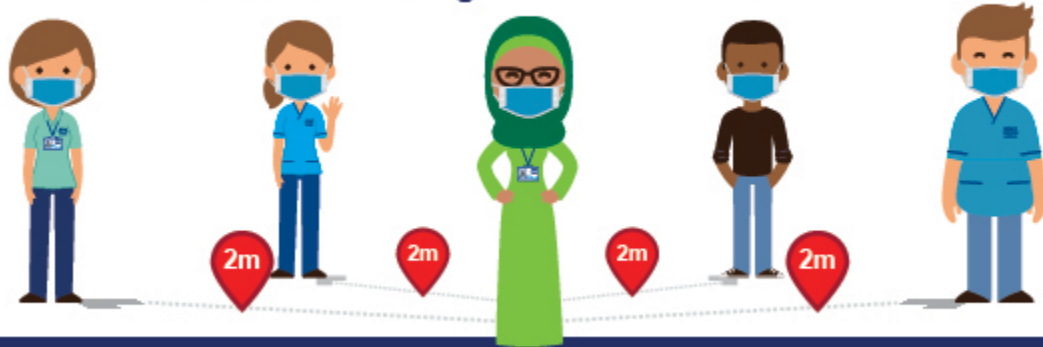
"I look forward to continuing to work with her in her new role as Chief Executive of Inverclyde Council as we work in partnership to deliver for the people of Inverclyde."

Louise said: "I am delighted to be appointed Chief Executive of Inverclyde Council. My time with Inverclyde since joining has been inspiring, seeing how public service staff have responded to supporting the community especially during the pandemic. I aim to build on the work that has been done and ensure that Inverclyde continues to nurture our communities, deliver excellent public services and be a force for good for each and every part of our area."

Louise is expected to take up post following the retirement of the current Council Chief Executive in September 2021 and arrangements will now be made for her replacement.

Social distancing is everyone's responsibility

Remember 2m distancing includes breaks and lunchtimes



Do it, encourage it. Don't spread the virus at work or home

Please keep up-to-date with the latest guidance on our dedicated web pages at: www.nhsggc.org.uk/covid19. If you have any questions about the current situation please check the [FAQs](#) first. If you have any further questions, please email: staff.covid19@ggc.scot.nhs.uk

Staff are reminded to make sure their [personal contact details are up to date on eESS](#).

It is important to share Core Brief with colleagues who do not have access to a computer.
A full archive of printable PDFs are available on [StaffNet](#)