



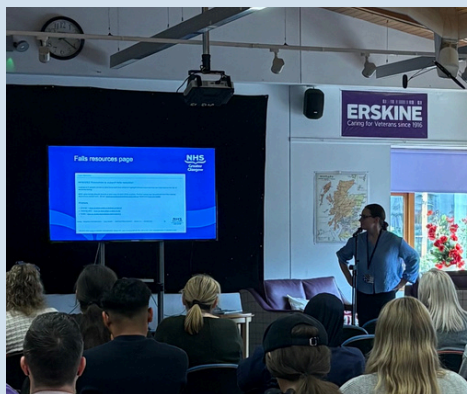
## Falls Development Day - Erskine Veteran's Village



On the 24<sup>th</sup> September the CHC ran a Falls Development Day hosted by Erskine Veteran's Village. Presentations were given on topics that could cause a resident to fall including continence, medication and sensory impairments. Further information and advice was provided by the Care Inspectorate and NHSGGC Falls team.



One particular highlight was the interactive sensory session, where people were able to experience what it was like to complete simple tasks with their hearing and sight impaired. Feedback was very positive with participants stating that they found the sessions to be highly informative. A huge thank you to our hosts, speakers and participants for making this a very successful day.





# Alpacas visit Norwood Care Home

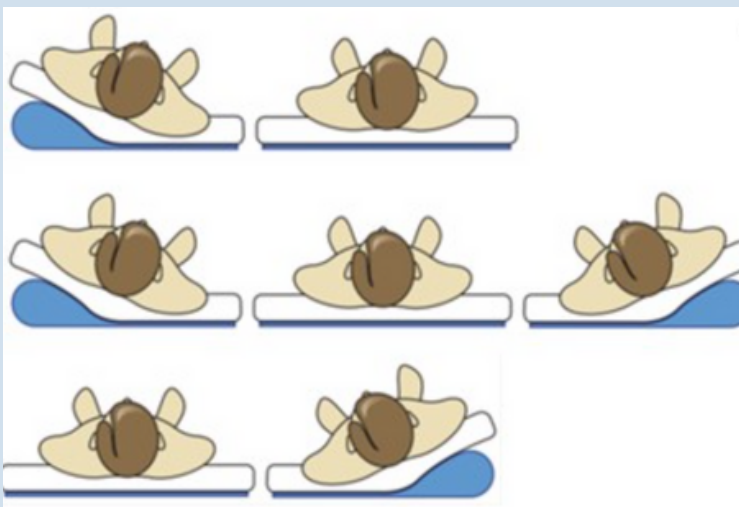
Sharon, one of our care support workers had the pleasure of going along to Norwood care home for afternoon tea. She chatted with the manager Sue and met some of the residents and their families. She also got introduced to a couple of handsome Alpacas called Charlie and Chico who were visiting for the day. The residents (and staff!) had a great afternoon meeting the Alpacas. Well done to Norwood for organising this for their residents!



Norwood staff and residents with Charlie and Chico

## Reflection corner - Lateral turning systems

The CHC Tissue Viability Nurse Specialist recently supported a local care home resident living with severe pressure ulcers. The resident preferred lying on his back and was reluctant to change position, increasing the risk of further skin damage.



During a joint visit with care staff and the clinical lead, they explored ways to reduce pressure while respecting the resident's comfort.

A lateral tilting system was recommended, this equipment gently shifts the person's position in bed, helping relieve pressure, improve sleep, and reduce the need for disruptive manual turning.

Following its introduction, the resident's wounds showed remarkable improvement. The outcome highlights how collaboration, compassion, and the right tools can support healing while preserving dignity.

# Tissue Viability Network

We are pleased to announce the launch of a Tissue Viability Link Network for care home staff who are Tissue Viability/Skin Champions or have an interest in wound care and pressure ulcer prevention.

There will be 6 weekly one-hour meetings on Teams designed to support staff by sharing ideas, providing updates, and delivering education on all aspects of tissue viability from wound care to pressure ulcer prevention and management.

The meetings will offer:

- The latest updates and guidance on tissue viability
- Educational sessions to enhance knowledge and skills
- Opportunities to share experiences and best practices
- Access to resources to improve resident outcomes

Whether you are already involved in tissue viability work or are interested in learning more, this network provides an excellent platform to connect with colleagues and strengthen your expertise.

The first meeting will be scheduled soon.

If you would like to join or require further information, please contact:

**Caroline Elsegood, Tissue Viability Nurse at [ggc.chccontact@nhs.scot](mailto:ggc.chccontact@nhs.scot)**

We look forward to welcoming new members and working together to improve care for our residents.



## Prevent the Pressure Webinars



### Prevent the Pressure: Training for Pressure Ulcer Prevention & Airflow Use

Learn how to prevent and manage pressure ulcers effectively.

This session covers correct use of airflow mattresses and key signs to watch for when caring for residents

#### Topics covered will include:

- Understand how pressure ulcers occur
- Work as a team to prevent and manage pressure damage
- Strategies to prevent pressure damage
- Airflow Mattress guide and troubleshooting



Please click on the [link](#) to register or scan the QR code

For any queries contact:  
[ggc.chccontact@ggc.scot.nhs.uk](mailto:ggc.chccontact@ggc.scot.nhs.uk)

Webinars will be held every 6 weeks, from 2pm - 4pm on the following dates - scan the QR code to book on a session.

- 28<sup>th</sup> October
- 20<sup>th</sup> November (extra session for Stop The Pressure Day)
- 22<sup>nd</sup> January
- 5<sup>th</sup> March
- 16<sup>th</sup> April
- 28<sup>th</sup> May
- 9<sup>th</sup> July





# Mobile Skills Unit

## Clinical Skills Opportunities for Care Homes October 2025

Your Program includes:

- Male catheterisation refresher
- Venepuncture
- A-E Assessment
- Wound assessment/ packing & swabbing

### Additional Sessions

- Palliative care for carers
- Strength & Balance Taster
- Delirium

20th - 21st October  
LSOP Holy Rosary, Greenock, PA16 8DP  
22nd - 23rd October  
Golfhill Care Home, Glasgow, G31 2HG  
24<sup>th</sup> October  
Campsie View Care Home, Kirkintilloch, G66 1QY

[Register Here](#)



The CHC team are bringing the Mobile Skills Unit back.



There are still some spaces available for the following sessions:

- Venepuncture (pre-reading required)
- Palliative care for carers
- Delirium
- Strength and Balance Taster.

[Register here](#)



## Calling all care homes ...

We want to hear from you! Do you have any stories that you would like to share with other care home residents and staff? [Contact us via our email address](#) and we will get in touch to discuss sharing your story in future editions of the newsletter





# Containment Product Delivery

**UPDATE**

Care Homes currently receive deliveries of containment products every 4 weeks which is 13 deliveries per year. With the move to 8-weekly deliveries, the number of deliveries will reduce to 7 per year.

NHSGGC have arranged a series of Microsoft Teams meetings to allow any staff from Care Homes to attend and ask questions or raise concerns.

To book on to a Q&A session and be sent an invite link, please email the required information, listed below to [ggc.carehome.8weekenquiries@nhs.scot](mailto:ggc.carehome.8weekenquiries@nhs.scot) quoting the support session number(s) you'd like to attend.

Required information to be emailed:

- Name of person attending
- Designation
- Email Address
- Care Home
- Session Number you wish to attend



Support Session Number	Date of session	Time
Support Session 5	Thursday 9th October	14:00 - 15:00
Support Session 6	Monday 20th October	10:00 - 11:00
Support Session 7	Monday 3rd November	15:00 - 16:00
Support Session 8	Thursday 20th November	14:00 - 15:00
Support Session 9	Wednesday 3rd December	15:30 - 16:30
Support Session 10	Monday 15th December	10:00 - 11:00

## Medicines survey

We want to hear from you about the challenges you have managing medications for your care home residents- what is the pebble in your shoe that causes you problems?

Please tell us all about them by scanning the QR code below or clicking on the link and completing the [Medicines Provisions survey](#).



Previous surveys have had good suggestions for pieces of work which we have taken forward together to improve care home residents access to medication

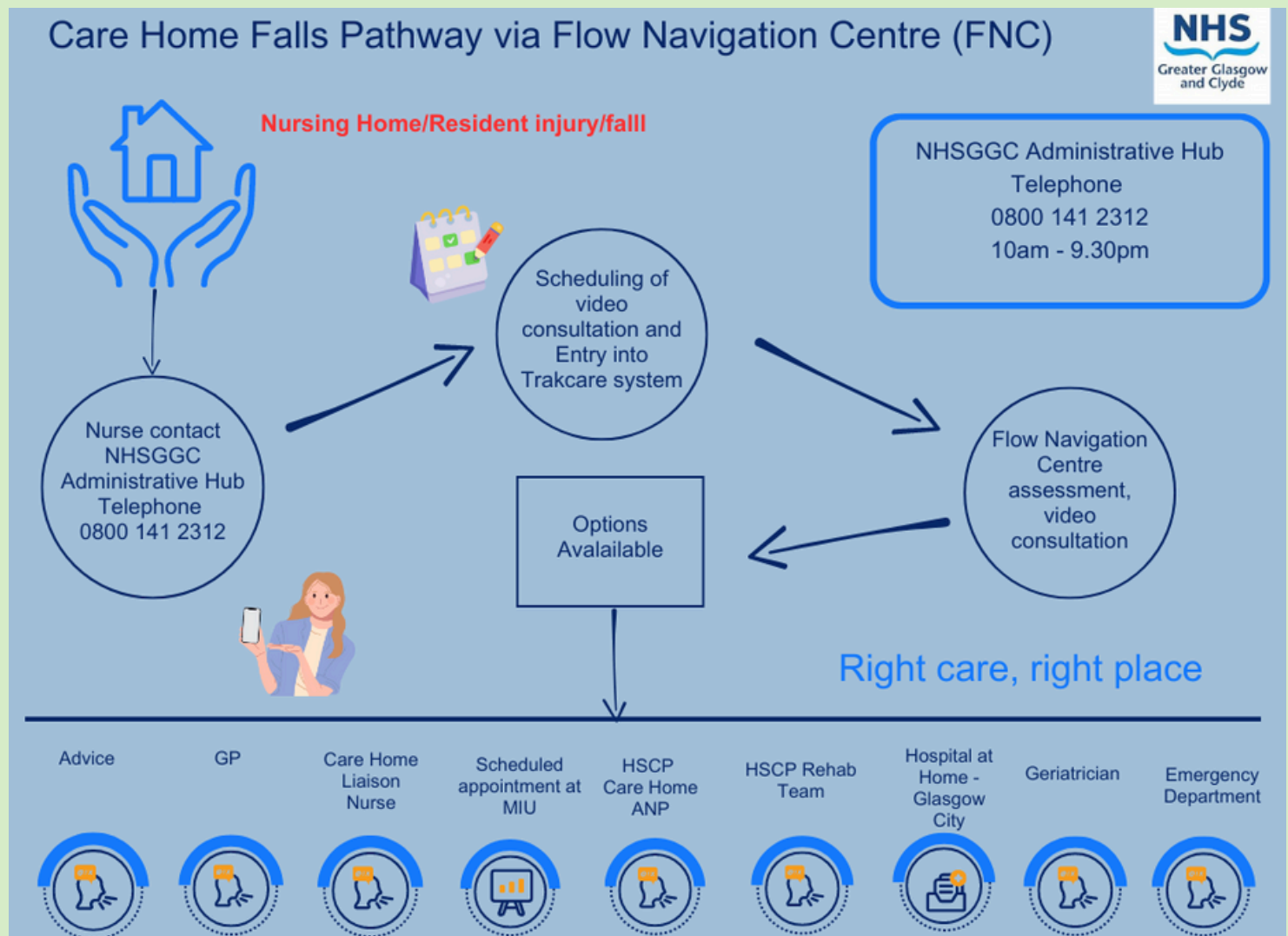
# Care Home Falls Pathway via Flow Navigation Centre

The GGC Care Home Falls Pathway from the Flow Navigation Centre (FNC) is available to all GGC care homes. It allows care homes to quickly access support and advice when a resident has fallen.

Using the Care Home Falls Pathway can help to avoid unnecessary visits to hospital. It can also help to keep residents comfortable at home in their own environment.

The support offered might include advice, and/or a next day appointment at a Minor Injury Unit (MIU) or a range of other community supports.

If a resident needs to go to hospital, the FNC service will assist with contacting the hospital and organising the ambulance.



When contacting **0800 141 2312**, you will hear the following message ...

“You have reached Health Records, Admin Falls Hub and Blood Test Booking Centre”.

You will then be advised that you are in a queue, please stay on the line until your call is answered. Let them know that you work in a Care Home and one of your residents has fallen and you will be guided through the next steps.





# EFFECTIVE DISCHARGES FROM HOSPITALS TO CARE HOMES

## NATIONAL MULTIAGENCY CARE HOME COLLABORATIVE – SHARING LEARNING EVENT



**27th of October, 2025**

**2PM - 3:45 PM**

**Microsoft Teams**

**Scan the QR  
Code to register  
for the event**



### Target Learners

Those working in Health and Social Care with an interest in supporting people to experience effective discharges from inpatient hospital settings to a care home setting.

### Aim

- To learn together to develop and strengthen a shared understanding on what makes a good discharge – from the individual/ unpaid carer/ care home worker/ service/ systems perspective.
- To promote awareness of resources that support learning about effective discharge planning from hospital to care homes.

### Learning Outcomes

By the end of this session individuals should be able to:

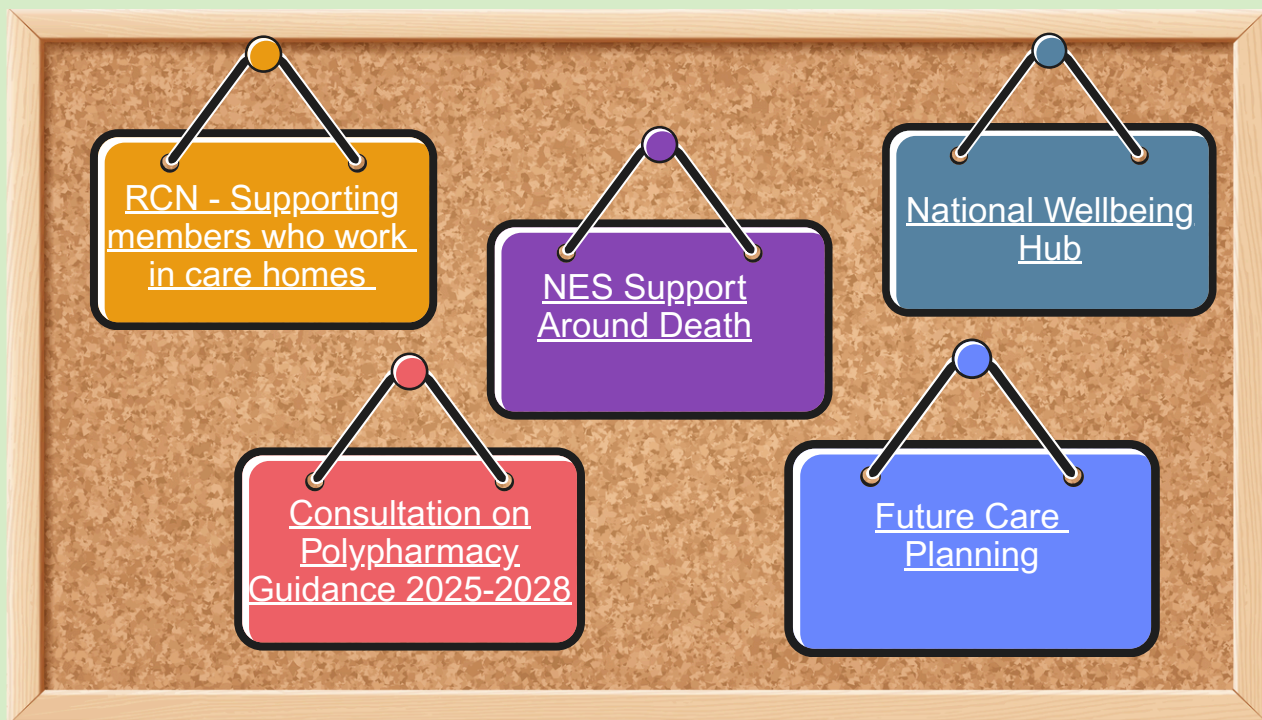
1. Discuss how discharge planning relates to the Health and Social Care standards and how this applies to their own work area.
2. Discuss the elements necessary for a good discharge, from hospital to a care home, for the individual, unpaid carer, care home worker, service and systems perspective.
3. Reflect on how the elements of good discharge practice relate to their own professional code of proficiency/code of practice.
4. Reflect on current practice in their own area and identify areas where improvements are possible.
5. Initiate conversations in their own area of practice about how discharge planning of individuals to care homes could be improved for the benefit of the individual, unpaid carers, care home workers, services and systems.



[nes.scot.nhs.uk/our-work/social-care-directorate](https://nes.scot.nhs.uk/our-work/social-care-directorate)



# Resources



## Learning Opportunities

There are a number of training and education opportunities, over the next few months on the following topics. Please use the QR code to access our training page to book your place.

- Capturing Workplace Learning for RNs
- Confirmation of Death
- Delirium Risk Reduction
- Essentials in Dementia
- Falls Development Day
- Wound Care Study Day - 30<sup>th</sup> October
- Caring for Smiles - Multiple dates in October
- New Sage & Thyme communication training dates
- ARHAI Actively Preventing Catheter Associated Urinary Tract Infections in care homes



Scan QR code to access all training



## Useful links to further training

Turas is available to all social care professionals

Continence Assessment - Continence Pad training. Various dates visit Sphere and Bladder Website/Health and Social Care Professionals



## Get involved

There are many ways to get involved and the team welcomes your input.

- Sign-up for our newsletter and updates
- Share your stories of person centred care and good practice
- Follow us on social media.

Visit our website at [www.nhsggc.scot/carehomecollaborative](http://www.nhsggc.scot/carehomecollaborative) for up to date resources and training

