

Care Home Collaborative Newsletter



NHS
Greater Glasgow
and Clyde

August 2025 Issue 26

"Ciao"



There was much laughter in the sunny day room at St Francis Care Home in Govan, when the residents were preparing to complete their SQA Level 2 qualification in Italian. Some of the residents are native Italian speakers and other residents wanted to learn the language. Many of the resident's taking part, most in their late 80s and 90s, did so whilst living with dementia. Congratulations to all!



Residents from St Francis' enjoying their class

The lessons in the last 10 weeks were taught through geography, history, art and music making them of interest to the residents learning. Each session was rounded off by listening to beautiful Italian music.



Teacher Gloria Lattanzi was full of energy and laughter as she lead her students through their workbooks and final session.



Gloria Lattanzi with Shareen Beg (Activity Coordinator)

Bonnyton Football Memories

During a recent meaningful activity focused on Scottish football memories with the residents of Bonnyton Care Home, we uncovered our very own football legend — Peter Prior. Peter played as a left winger for Dundee United, among other teams, in a professional capacity.



Peter Prior (pictured right)

It was a wonderful day of reminiscing, filled with stories and shared memories, following a special presentation for Peter and a group of enthusiastic football fans.



Peter Prior with Stuart Wilson (Care Support Worker)

Swallowing Matters rollout

Glasgow City – HSCP Speech and Language Therapy (SLT) service are launching Swallowing Matters with a programme commencing in September 2025. Swallowing Matters is a comprehensive resource for care home staff to help support residents with eating, drinking and swallowing difficulties. This proven tool has been successfully used in other health boards in Scotland.



Benefits of the programme are:

- Support for care home staff to independently and effectively manage aspects of individual resident care in relation to eating, drinking and swallowing following evidence based and standardised guidance
- Easy to follow pathways as well as guidance and resources to ensure records meet Care Inspectorate standards
- Helps care home staff identify when to refer directly to specialist speech and language therapists

The initial roll out will be provided by Glasgow City HSCP SLT Service, Care Home and Hospice Team, via in-person sessions in September 2025. Care Home managers are being encouraged to participate in the roll out of the programme and to facilitate staff attendance and implementation.

Initial training will be open to senior carers, nurses and clinical leads working in non-NHS residential, nursing and hospice facilities across Glasgow City, East Dunbartonshire, East Renfrewshire and West Dunbartonshire (Clydebank) areas only.



Falls Development Day

As part of the 2025 Falls Prevention Week, the CHC is offering an interactive Development Day in Erskine Care Home, Renfrewshire on 24 September. The focus of the day will be topics relating to falls and falls prevention and will include the following:

- Reducing falls
- Rehabilitation Services
- Interactive sensory workshop
- Continence
- Medication and falls



Available to all Care Home Teams across GGC - Book your space on the [website](#) or you can use the QR code to register!

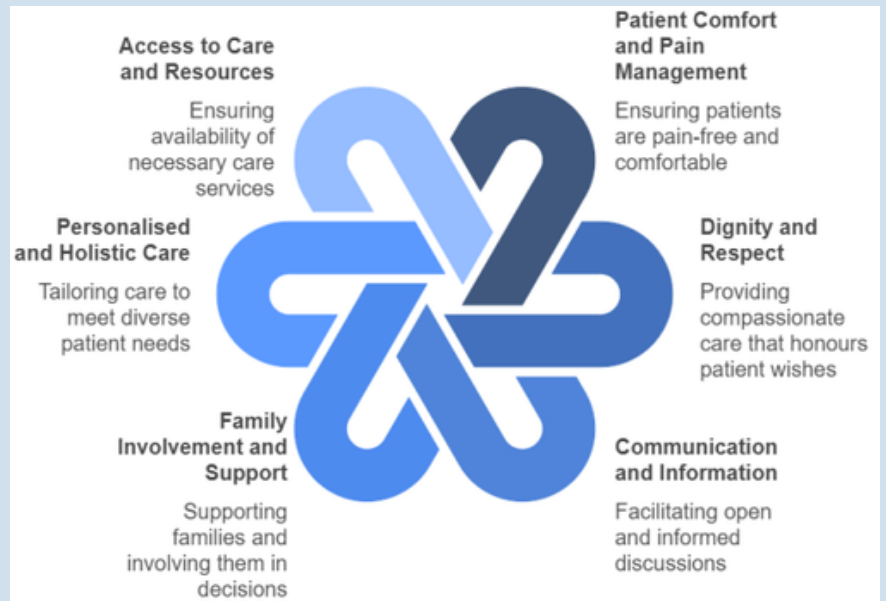


Palliative Care and Care Around Dying

NHSGGC recently took steps to understand what works well and what could be improved in palliative care and care around dying across all settings. A key part of this work was engaging with a wide range of stakeholders through an Accelerated Design Event (ADE). The main themes discussed are shown in the image below.

To help shape the event, over 200 stories were gathered from carers and families about their experiences with palliative care. This engagement helped ensure the event reflected real patient and family perspectives, giving a deeper understanding of current lived experiences.

John Young, Deputy Manager at Crosslet House Residential Care Home in Dumbarton was at the event. This is what he had to say;



Being able to attend the event reinforced the vital part that care home staff have in joint working with other health professionals. Residents moving into care homes can have multiple conditions. Care home staff provide a great deal of care around dying, ensuring residents have a dignified, comfortable death.

Capturing Workplace Learning - Care Home RNs

This is an opportunity open to all Care Home Registered Nurses within Greater Glasgow and Clyde. Learn how to build a portfolio of evidence that demonstrates the value of your knowledge, skills and experience within your workplace.

- Starting 1st September (series of webinars and support sessions)
- Recognition of the learning you are undertaking in your current role
- Plan and evidence your career development
- Prepare for career progression
- Additionally supports evidence required for NMC revalidation



Visit our [learning opportunities](#) page to sign up



Clinical Practice

Facilitating Learning

Leadership

Evidence, research and development



NEW!

Reflection Corner

"Reflection Corner" is a new space where we will showcase examples of how teams have overcome challenges in practice.

Our first reflection is based on a significant adverse review and acts as a reminder about safe medication practices. The incident involved a gentleman who, after a medication change, was accidentally given two blood thinners (anti-coagulants) instead of one.

The **MORE** you **REFLECT** the **MORE** you **LEARN**

Best practice to prevent similar incidents are:

- Document all medication changes clearly and record the details of any conversations in the residents' notes
- Ensure MAR (Medication Administration Record) is updated and that any discontinued medications are removed
- Where possible avoid mid-cycle changes – medication changes should take place at the beginning of a new medication cycle to reduce the risk of errors

If you have any concerns about a resident's medication, please contact their GP or local community pharmacist promptly for guidance.

RESTORE2 - Leadership Training for Care Home Leaders

RESTORE2 is a physical deterioration and escalation tool recommended by Scottish Government.

The RESTORE2 leadership training sessions will provide Care Home leaders with information and resources to train their staff and implement the tool in their care homes.

Manager Insights: The Impact of RESTORE2 in Practice

"All our residents now have baseline observations. For example, one resident has a consistently low pulse, and it's recorded — this has prevented unnecessary hospital admissions."

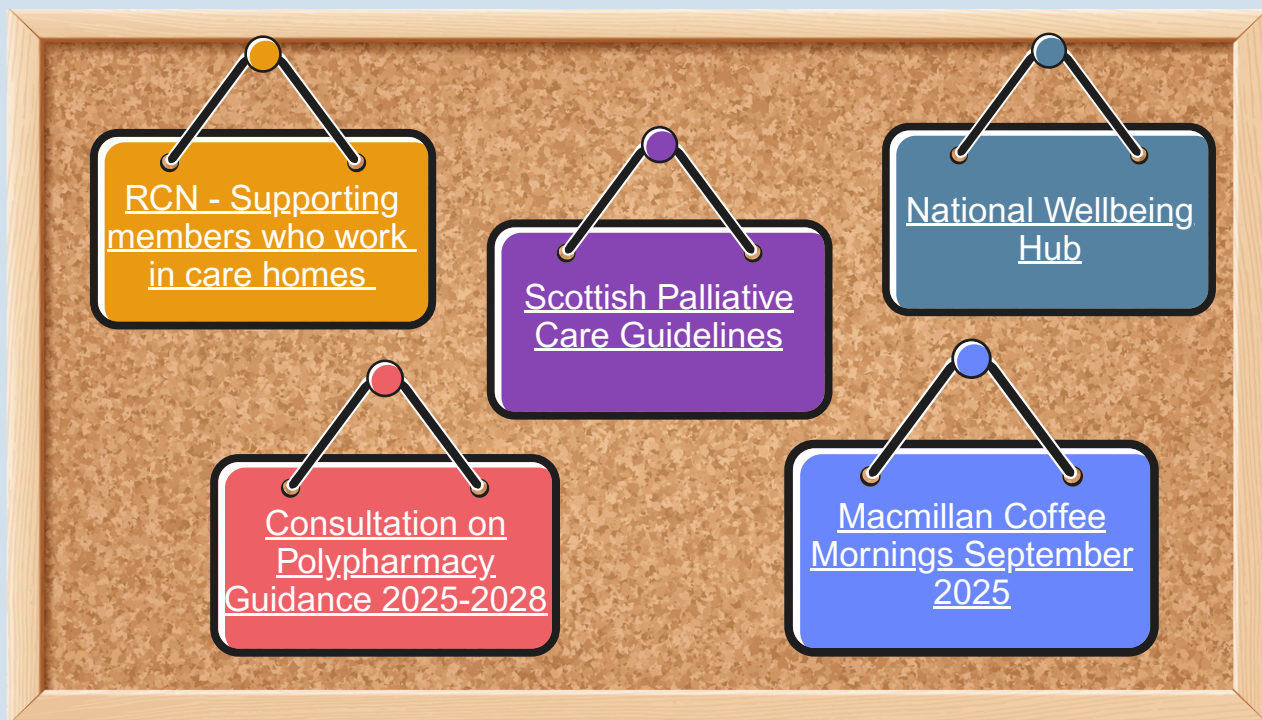
The image shows two versions of the RESTORE2 tool. The top version is the 'Adult Physiological Observation & Escalation Chart', which includes a QR code, a header with the RESTORE2 logo, and a table for recording observations. The bottom version is the 'RESTORE2 mini' chart, which is a simplified version of the tool. It includes a QR code, the RESTORE2 mini logo, and a section titled 'Ask your resident – how are you today?'. This section lists various 'soft signs' of deterioration, such as increasing breathlessness, changes in usual drinking/diet habits, shivery fever, reduced mobility, changes in usual level of alertness/consciousness/sleeping, 'Can't pee' or 'no pee', and diarrhoea, vomiting, dehydration. It also includes a section for 'If you answer YES to any of these triggers, your next steps'.



Since introducing RESTORE2, our nurses have become much more confident in their clinical decision-making. It's strengthened their knowledge and ability to act early."

If you are a Care Home manager, Deputy or Clinical Lead and you are interested in training your staff to use RESTORE2, please join us at one of our [training events](#).

Resources



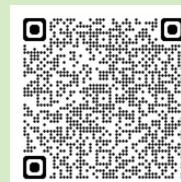
Learning Opportunities

There are a number of training and education opportunities, over the next few months on the following topics. Please use the QR code to access our training page to book your place.

- Capturing Workplace Learning for RNs
- Confirmation of Death
- Delirium Risk Reduction
- Essentials in Dementia
- Falls Development Day
- Wound Care Study Day
- Scottish Improvement Foundation Skills (SIFS)
- Swallowing Matters - Multiple dates in September
- New Sage & Thyme communication training dates
- ARHAI Actively Preventing Catheter Associated Urinary Tract Infections in care homes - more details to follow



Scan QR code to access all training



Useful links to further training

Turas is available to all social care professionals

Continence Assessment - Continence Pad training. Various dates visit Sphere and Bladder Website/Health and Social Care Professionals

Get involved

There are many ways to get involved and the team welcomes your input.

- Sign-up for our newsletter and updates
- Share your stories of person centred care and good practice
- Follow us on social media.

Visit our website at www.nhsggc.scot/carehomecollaborative for up to date resources and training

